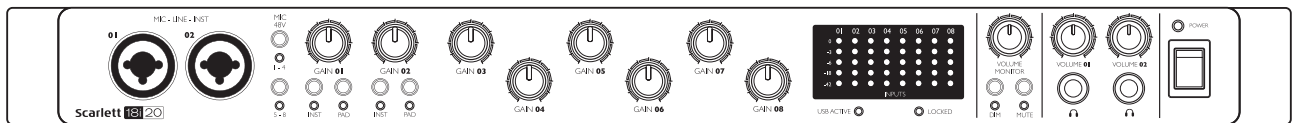



# Scarlett 18i20

## User Guide



# IMPORTANT SAFETY INSTRUCTIONS

1. Read these instructions.
2. Keep these instructions.
3. Heed all warnings.
4. Follow all instructions.
5. Do not use this apparatus near water
6. Clean only with dry cloth.
7. Do not block any ventilation openings. Install in accordance with the manufacturer's instructions
8. Do not install near any heat sources such as radiators, heat registers, stoves, or other apparatus (including amplifiers) that produce heat. Protect the power cord from being walked on or pinched particularly at plugs, convenience receptacles, and the point where they exit from the apparatus.
9. Do not defeat the safety purpose of the polarized or grounding-type plug. A polarized plug has two blades with one wider than the other. A grounding type plug has two blades and a third grounding prong. The wide blade or the third prong are provided for your safety. If the provided plug does not fit into your outlet, consult an electrician for replacement of the obsolete outlet.
10. Protect the power cord from being walked on or pinched particularly at plugs, convenience receptacles, and the point where they exit from the apparatus.
11. Only use attachments/accessories specified by the manufacturer.
12.  Use only with the cart, stand, tripod, bracket, or table specified by the manufacturer, or sold with the apparatus. When a cart is used, use caution when moving the cart/apparatus combination to avoid injury from tip-over
13. Unplug this apparatus during lightning storms or when unused for long periods of time.
14. Refer all servicing to qualified service personnel. Servicing is required when the apparatus has been damaged in any way, such as power-supply cord or plug is damaged, liquid has been spilled or objects have fallen into the apparatus, the apparatus has been exposed to rain or moisture, does not operate normally, or has been dropped.
15. No naked flames, such as lighted candles, should be placed on the apparatus.

The appliance coupler is used as the disconnect device, the disconnect device shall remain readily operable.

Do not use a damaged or frayed power cord.

If the mains plug supplying the apparatus incorporates a fuse then it should only be replaced with a fuse of identical or lower rupture value.

**WARNING:** Excessive sound pressure levels from earphones and headphones can cause hearing loss.

**WARNING:** This equipment must only be connected to USB 2.0 type ports.

**GB** The apparatus shall be connected to a mains socket outlet with a protective earthing connection.

**FIN** Laite on liitettävä suojamaadoituskoskettimilla va rustettuumpistorasiaan.

**NOR** Apparatet må tikoples jordet stikkontakt.

**SWE** Apparatens skall anslutas till jordat uttag.



**CAUTION:** TO REDUCE THE RISK OF ELECTRIC SHOCK, DO NOT REMOVE COVER (OR BACK). NO USER-SERVICEABLE PARTS INSIDE. REFER SERVICING TO QUALIFIED SERVICE PERSONNEL.



The lightning flash with arrowhead symbol, within equilateral triangle, is intended to alert the user to the presence of uninsulated “dangerous voltage” within the product’s enclosure that may be of sufficient magnitude to constitute a risk of electric shock to persons.



The exclamation point within an equilateral triangle is intended to alert the user to the presence of important operating and maintenance (servicing) instructions in the literature accompanying the appliance.

**WARNING:** TO REDUCE THE RISK OF FIRE OR ELECTRIC SHOCK, DO NOT EXPOSE THIS APPARATUS TO RAIN OR MOISTURE AND OBJECTS FILLED WITH LIQUIDS SUCH AS VASES, SHOULD NOT BE PLACED ON THIS APPARATUS.

# ENVIRONMENTAL DECLARATION

## Compliance Information Statement: Declaration of Compliance procedure

Product Identification: Focusrite Scarlett 18i20  
Responsible party: American Music and Sound  
Address: 4325 Executive Drive  
Suite 300  
Southaven  
MS 38672  
Telephone: 800-431-2609

This device complies with part 15 of the FCC Rules. Operation is subject to the following two conditions: (1) This device may not cause harmful interference, and (2) this device must accept any interference received, including interference that may cause undesired operation.

### For USA

#### To the User:

1. Do not modify this unit! This product, when installed as indicated in the instructions contained in this manual, meets FCC requirements. Modifications not expressly approved by Focusrite may void your authority, granted by the FCC, to use this product.
2. Important: This product satisfies FCC regulations when high quality shielded cables are used to connect with other equipment. Failure to use high quality shielded cables or to follow the installation instructions within this manual may cause magnetic interference with appliances such as radios and televisions and void your FCC authorization to use this product in the USA.
3. Note: This equipment has been tested and found to comply with the limits for a Class B digital device, pursuant to part 15 of the FCC Rules. These limits are designed to provide reasonable protection against harmful interference in a residential installation. This equipment generates, uses and can radiate radio frequency energy and, if not installed and used in accordance with the instructions, may cause harmful interference to radio communications. However, there is no guarantee that interference will not occur in a particular installation. If this equipment does cause harmful interference to radio or television reception, which can be determined by turning the equipment off and on, the user is encouraged to try to correct the interference by one or more of the following measures:
  - Reorient or relocate the receiving antenna.
  - Increase the separation between the equipment and receiver.
  - Connect the equipment into an outlet on a circuit different from that to which the receiver is connected.
  - Consult the dealer or an experienced radio/TV technician for help.

### For Canada

#### To the User:

This Class B digital apparatus complies with Canadian ICES-003.  
Cet appareil numérique de la classe Best conforme à la norme NMB-003 du Canada.

#### RoHS Notice

Focusrite Audio Engineering Limited has conformed where applicable, to the European Union's Directive 2002/95/EC on Restrictions of Hazardous Substances (RoHS) as well as the following sections of California law which refer to RoHS, namely sections 25214.10, 25214.10.2, and 58012, Health and Safety Code; Section 42475.2, Public Resources Code.

# TABLE OF CONTENTS

<b>IMPORTANT SAFETY INSTRUCTIONS</b> .....	<b>2</b>
<b>TABLE OF CONTENTS</b> .....	<b>5</b>
<b>OVERVIEW</b> .....	<b>6</b>
Introduction .....	6
Features .....	6
Box Contents .....	7
Mac OS .....	7
Windows .....	7
<b>GETTING STARTED</b> .....	<b>8</b>
Software Installation .....	8
<b>HARDWARE FEATURES</b> .....	<b>9</b>
Front Panel .....	9
Rear Panel .....	11
Connecting your Scarlett 18i20 .....	12
Mac OS only: .....	12
Windows only: .....	12
Audio Setup in your DAW .....	12
Example of Usage .....	14
1. Recording a band .....	14
2. Connecting Scarlett 18i20 to loudspeakers .....	16
3. Using the ADAT connections .....	18
4. Using the Scarlett 18i20 as a stand-alone mixer .....	19
<b>Scarlett MixControl</b> .....	<b>20</b>
Mixer .....	21
Mixer Tab .....	21
Input Channel .....	22
Output Channel .....	25
Routing Presets .....	27
Monitor Section .....	28
Device Status section .....	32
File Menu .....	34
Scarlett 18i20 Performance Specifications .....	35
Physical and Electrical Characteristics .....	36
Troubleshooting .....	37
<b>COPYRIGHT AND LEGAL NOTICES</b> .....	<b>37</b>

# OVERVIEW

## Introduction

Thank you for purchasing this Scarlett 18i20, one of the family of Focusrite professional computer audio interfaces incorporating high quality Focusrite analogue pre-amplifiers. You now have a compact yet highly versatile solution for routing high quality audio to and from your computer. You can also use the Scarlett 18i20 as a “stand-alone” interface to any other type of recording device, once you have configured it using Scarlett MixControl software.

This User Guide provides a detailed explanation of the hardware and software to help you achieve a thorough understanding of the product’s operational features. We recommend that you take the time to read through the user guide, whether you’re new to computer recording or a more experienced user, so that you are fully aware of all the possibilities that the Scarlett 18i20 and accompanying software has to offer. If the main User Guide sections do not provide the information you need, be sure to consult <http://www.focusrite.com/answerbase>, which contains a comprehensive collection of answers to common technical support queries.

## Features

The Scarlett 18i20 hardware interface provides the means for connecting microphones, musical instruments, line level audio signals and digital audio signals to a computer running compatible versions of Mac OS or Windows via one of the computer’s USB ports. The signals at the physical inputs can be routed to your audio recording software / digital audio workstation (referred to throughout this user guide as the “DAW”); similarly, the DAW’s monitor or recorded outputs can be configured to appear at the unit’s physical outputs.

Audio sources – mics, instruments, etc. - connected to the physical inputs can be recorded in your DAW and then replayed from there to the physical outputs. The physical outputs can be connected to amplifiers and speakers, powered monitors, headphones, an audio mixer or any other analogue or digital audio equipment that you wish to use. Although all inputs and outputs on the Scarlett 18i20 are routed directly to and from your DAW for recording and playback, you can configure the routing within your DAW in order to meet your precise needs.

The Scarlett 18i20 also has connectors for sending and receiving MIDI data, and for transmitting word clock to ensure synchronisation with other items of digital audio equipment.

The accompanying software application, Scarlett MixControl, provides further routing and monitoring options, as well as the ability to control global hardware settings such as sample rate and synchronisation.

All inputs on the Scarlett 18i20 are routed directly to your DAW software for recording, but Scarlett MixControl also allows you to route these signals internally within the device to the outputs so that you can monitor the audio signals with ultra-low latency - before they arrive at your DAW.

## Box Contents

Along with your Scarlett 18i20 you should have:

- AC mains cable with IEC connector
- USB cable
- Getting Started Guide
- Software Activation card, with codes for accessing the following on-line resources:
  - Scarlett MixControl – includes Mac/Windows USB drivers
  - Scarlett Plug-in Suite for Mac and Windows
  - Ableton Live Lite
  - LoopMasters sample library
  - Novation Bass Station

## System requirements

### Mac OS

Apple Macintosh with a high-speed USB 2.0-compliant USB port  
OS: Mac OS X 10.7, OS X 10.8, or later

### Windows

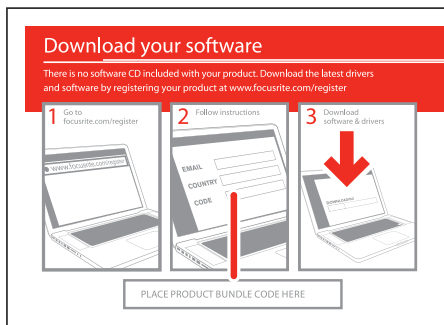
Windows compatible computer with a USB 2.0-compliant USB port  
OS: Windows 7 (all versions) or Windows 8 (excluding Windows 8 RT)

# GETTING STARTED

**IMPORTANT:** PLEASE ENSURE THAT YOU INSTALL THE SCARLETT 18i20 DRIVERS BEFORE CONNECTING THE INTERFACE TO YOUR COMPUTER.

## Software Installation

All software required by the Scarlett 18i20 - and several powerful and useful extras - is available for download from the Focusrite website ([www.focusrite.com/register](http://www.focusrite.com/register)). The Software Activation card provided with your Scarlett 18i20 contains validation codes which you will need to enter at the above web address. This procedure ensures that you will have the most up-to-date software versions.

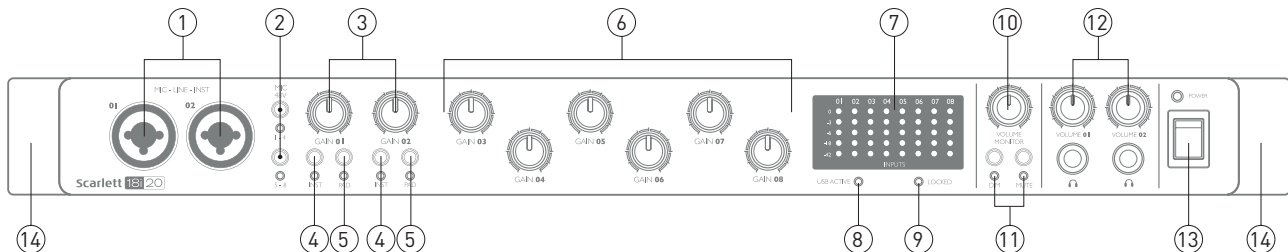


1. Using your usual browser, go to <http://www.focusrite.com/register/>.
2. Follow the on-screen instructions, enter the "Product Bundle Code" into the form where prompted. Your "Product Bundle Code" can be found on the Software Download Card packed with the unit.
3. You will then be able to access the "My Products" page, where the software products to which your registration entitles you are available for download, complete with activation codes where applicable.
4. Download and install Scarlett MixControl. Follow all on-screen instructions.
5. When the installation is complete, restart your computer.
6. After restart, connect the Scarlett 18i20 to your computer with the USB cable supplied.



# HARDWARE FEATURES

## Front Panel



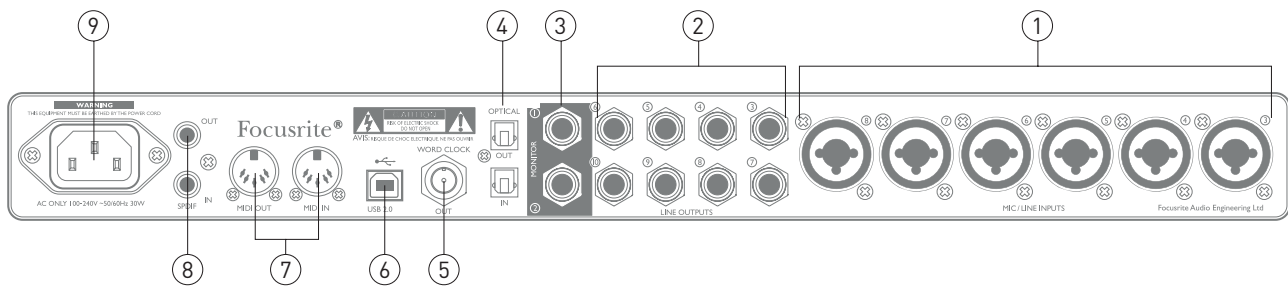
The front panel includes all the input gain and monitoring controls as well as two of the input connectors for Mic, Line and Instrument signals.

1. **MIC-LINE-INST 01 & 02** – Neutrik Combo® input sockets - connect microphones, instruments (e.g., guitar), or line level signals via XLR or ¼" (6.35 mm) jacks as appropriate. Either ¼" TRS (balanced) or TS (unbalanced) jack plugs can be used for instruments or line level signals.
2. **MIC 48V** – two switches enabling 48 V phantom power at the XLR contacts of the Combo connectors for mic inputs 1-4 and 5-8 respectively. (Note that inputs 3 to 8 are on the rear panel.) The switches each have an associated red LED indicating that phantom power is selected.
3. **GAIN 01 and GAIN 02** - adjust the input gain for the signals at Inputs 1 and 2 respectively.
4. **INST** – two switches changing the input configuration for the jack contacts at inputs 1 and 2. When INST is selected, the gain range and input impedance are altered (relative to LINE), and the input is made unbalanced. This optimises it for the direct connection of instruments (usually via a 2-pole (TS) jack plug). When INST is off, the inputs are suitable for the connection of line level signals. Line level signals may be connected either in balanced form via a 3-pole (TRS) jack or unbalanced, via a 2-pole (TS) jack. The switches each have an associated red LED indicating that INST is selected.
5. **PAD** – two switches which insert a 10 dB pad in the signal paths of Inputs 1 and 2. With the pad applied, the maximum input signal level is +16 dBu. The switches each have an associated red LED indicating that PAD is selected.
6. **GAIN 03 to GAIN 08** – adjust the input gain for the signals at Inputs 3 to 8 respectively. (Note that inputs 3 to 8 are on the rear panel.)
7. **Input meters** – eight 5-segment LED bargraph meters indicating the signal levels of the eight analogue input signals. The meters show signal level after the input gain stage, and thus their indication is affected by the gain controls. The LEDs illuminate at -42 (green, "signal present"), -18 (green), -6 (green), -3 (yellow) and 0 dBFS (red). A level of 0 dBFS implies digital clipping, and should always be avoided.
8. **USB ACTIVE** – a green LED which illuminates when the unit is recognised by the computer to which it is connected.
9. **LOCKED** – a green LED which confirms word clock synchronisation, either to the Scarlett's 18i20's internal clock or to an external digital input.
10. **VOLUME MONITOR** - main monitor output level control – this control will normally control

the level at the main monitor outputs on the rear panel, but can be configured in Scarlett MixControl to adjust the level at any of the unit's ten analogue outputs.

11. **DIM and MUTE** – two switches controlling the 18i20's monitor outputs; DIM reduces the output levels by 18 dB, while MUTE turns the outputs off. By default, these switches affect the main monitor outputs 1 and 2, but may be configured in Scarlett MixControl to act on any of the analogue outputs. The switches each have an associated LED (DIM: yellow, MUTE: red) indicating that the function is selected.
12. **VOLUME 01** and **VOLUME 02** – connect one or two pairs of stereo headphones at the two ¼" (6.25 mm) TRS jack sockets below the controls. The headphone outputs always carry the signals that currently routed to analogue outputs 7/8 and 9/10 (as stereo pairs) in Scarlett MixControl.
13. **POWER** - AC power switch and LED.
14. Rack ears for mounting the Scarlett 18i20 in a standard 19" equipment rack.

## Rear Panel



1. **MIC/LINE INPUTS 3 to 8** - Neutrik Combo® input sockets - connect further microphones or line level signals via XLR or ¼" (6.35 mm) jacks as appropriate. Either ¼" TRS (balanced) or TS (unbalanced) jack plugs can be used for line level signals.
2. **LINE OUTPUTS 3 to 10** – eight balanced analogue line outputs on ¼" (6.35 mm) jack sockets; use TRS jacks for a balanced connection or TS jacks for unbalanced. The signals available at these outputs are defined in Scarlett MixControl, and can typically be used for driving alternative speakers (i.e., midfield, nearfield, etc.), the additional speakers in a multichannel monitoring system, or to drive outboard FX processors.
3. **MONITOR 1 and 2** – two balanced analogue line outputs on ¼" (6.35 mm) jack sockets; use TRS jacks for a balanced connection or TS jacks for unbalanced. These are also Line Outputs 1 and 2 of the system, and will generally be used for driving the main L and R speakers of your monitoring system. However, the signals at the outputs may be defined in Scarlett MixControl.
4. **OPTICAL IN and OUT** – two TOSLINK connectors, each carrying eight channels of digital audio in ADAT format at 44.1/48 kHz sample rate or four channels at 88.2/96 kHz. These are simply additional inputs and outputs (respectively) to/from the Scarlett 18i20.
5. **WORD CLOCK OUT** – a BNC connector carrying the Scarlett 18i20's word clock; this may be used to synchronise other digital audio equipment forming part of the recording system. The source of sample clock synchronisation used by the Scarlett 18i20 is selected in Scarlett MixControl.
6. **USB 2.0 port** – Type B connector; connect the Scarlett 18i20 to your computer with the cable supplied.
7. **MIDI IN and MIDI OUT** – standard 5-pin DIN sockets for connection of external MIDI equipment. The Scarlett 18i20 acts as a "Break-out (and Break-in) Box", allowing MIDI data to/from your computer to be distributed to additional MIDI devices.
8. **SPDIF IN and OUT** – two phono (RCA) sockets carrying two-channel digital audio signals in or out of the Scarlett 18i20 in S/PDIF format. Like all the other inputs and outputs, signals at these connectors may be routed in Scarlett MixControl.
9. **AC mains** – standard IEC receptacle.

## Connecting your Scarlett 18i20

**IMPORTANT:** Before you connect the Scarlett 18i20 to your computer, please complete the software installation according to the instructions on page 8. This will ensure that the hardware uses the correct drivers, and will prevent unexpected behaviour.

The Scarlett 18i20 should be connected to AC mains with the supplied AC power cable. Plug the IEC connector into the rear panel IEC receptacle and turn the unit on with the front panel power switch.

The Scarlett 18i20 has a single USB 2.0 port (on the rear panel). Once the software installation is complete, simply connect the Scarlett 18i20 to your computer using the USB cable provided. (Note that Scarlett 18i20 is a USB 2.0 device, and thus the USB connection requires a USB 2.0-compliant port on your computer. It will not operate correctly with USB 1.0/1.1 ports.)

### Mac OS only:

Your OS should automatically switch the computer's default audio connections to be the USB port to which the Scarlett 18i20 is connected. To verify this, go to **System Preferences > Sound**, and check that the active input and output are set to **Scarlett 18i20**. For more detailed setup options on a Mac, open **Applications > Utilities > Audio MIDI Setup**.

### Windows only:

Your OS should automatically switch the computer's default audio connections to be the USB port to which the Scarlett 18i20 is connected. To verify this:

- on Windows 7 - go to **Start > Control Panel > Hardware and Sound > Sound > Manage Audio Devices** and ensure that 'Default Playback' and 'Recording' are set to 'Scarlett 18i20'.
- on Windows 8, navigate to **Control Panel** and then select **Hardware and Sound > Sound > Manage Audio Devices** and ensure that 'Default Playback' and 'Recording' are set to 'Scarlett 18i20'.

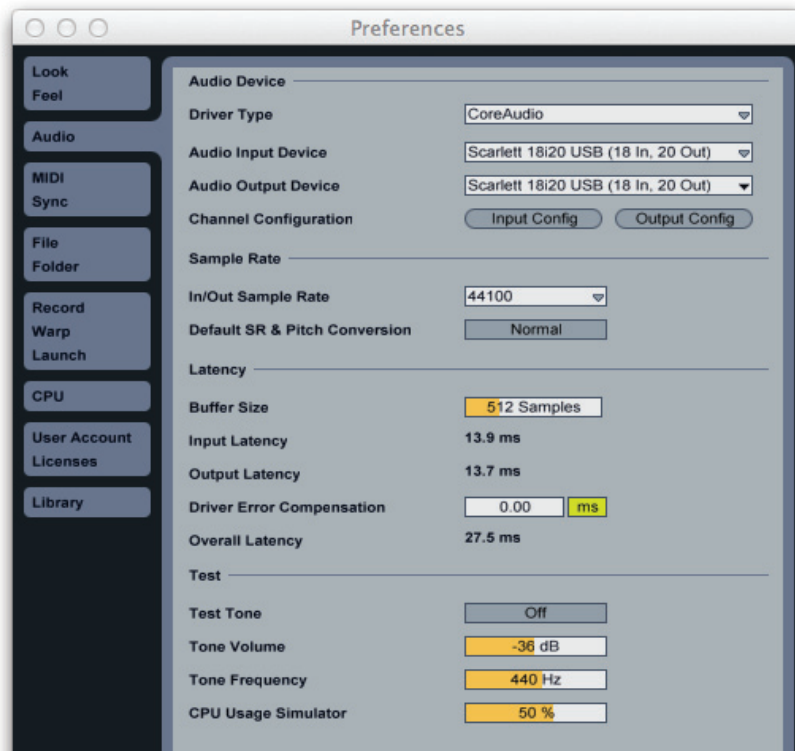
## Audio Setup in your DAW

The Scarlett 18i20 is compatible with any Windows-based DAW that supports ASIO or WDM\* or any Mac-based DAW that uses Core Audio. After installing the drivers and connecting the hardware, you can start using the Scarlett 18i20 with the DAW of your choice. To allow you to get started if you do not already have a DAW application installed on your computer, Ableton Live Lite is included; this will be available to you once you've downloaded and activated your software on-line. To install Ableton Live Lite, download and save the Ableton installer file from your registered Focusrite "My Products" page as described above, and then run it, following all on-screen instructions.

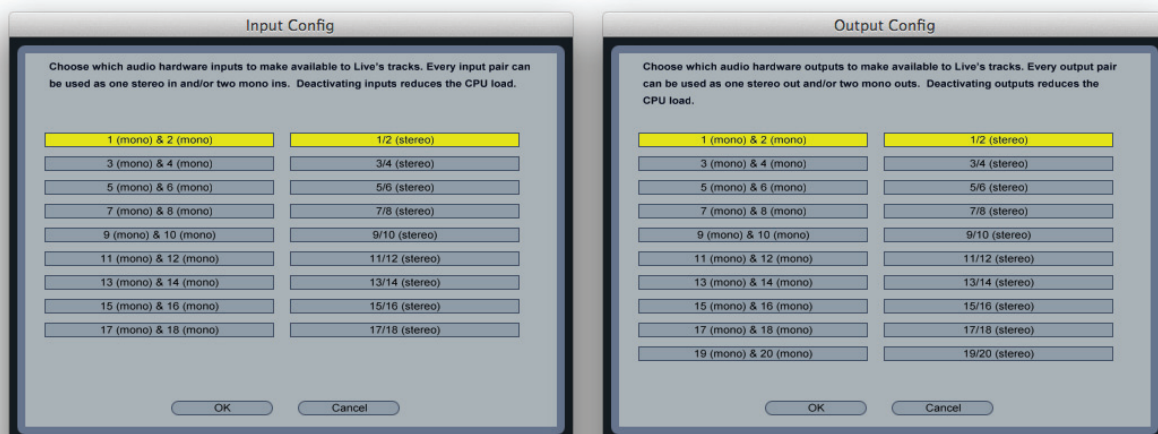
Operating instructions for Ableton Live Lite are beyond the scope of this User Guide, but the application includes a full set of Help files.

\*only compatible with 16-bit audio under WDM

Please note - your DAW may not automatically select the Scarlett 18i20 as its default I/O device. In this case, you must manually select the driver on your DAW's Audio Setup\* page (select "Scarlett 18i20" driver for Mac or "Focusrite USB 2.0" driver for Windows). Please refer to your DAW's documentation (or Help files) if you are unsure where to select the ASIO/ Core Audio driver. The example below shows the correct configuration in the Ableton Live Lite Preferences panel (Mac version shown).



Once the Scarlett 18i20 is set as the preferred Audio Device\* in your DAW, all the inputs and outputs will appear in your DAW's Audio I/O preferences. Depending on your DAW, you may need to enable certain inputs or outputs before use. The two examples below show two inputs and two outputs enabled in the Ableton Lite Audio Preferences.

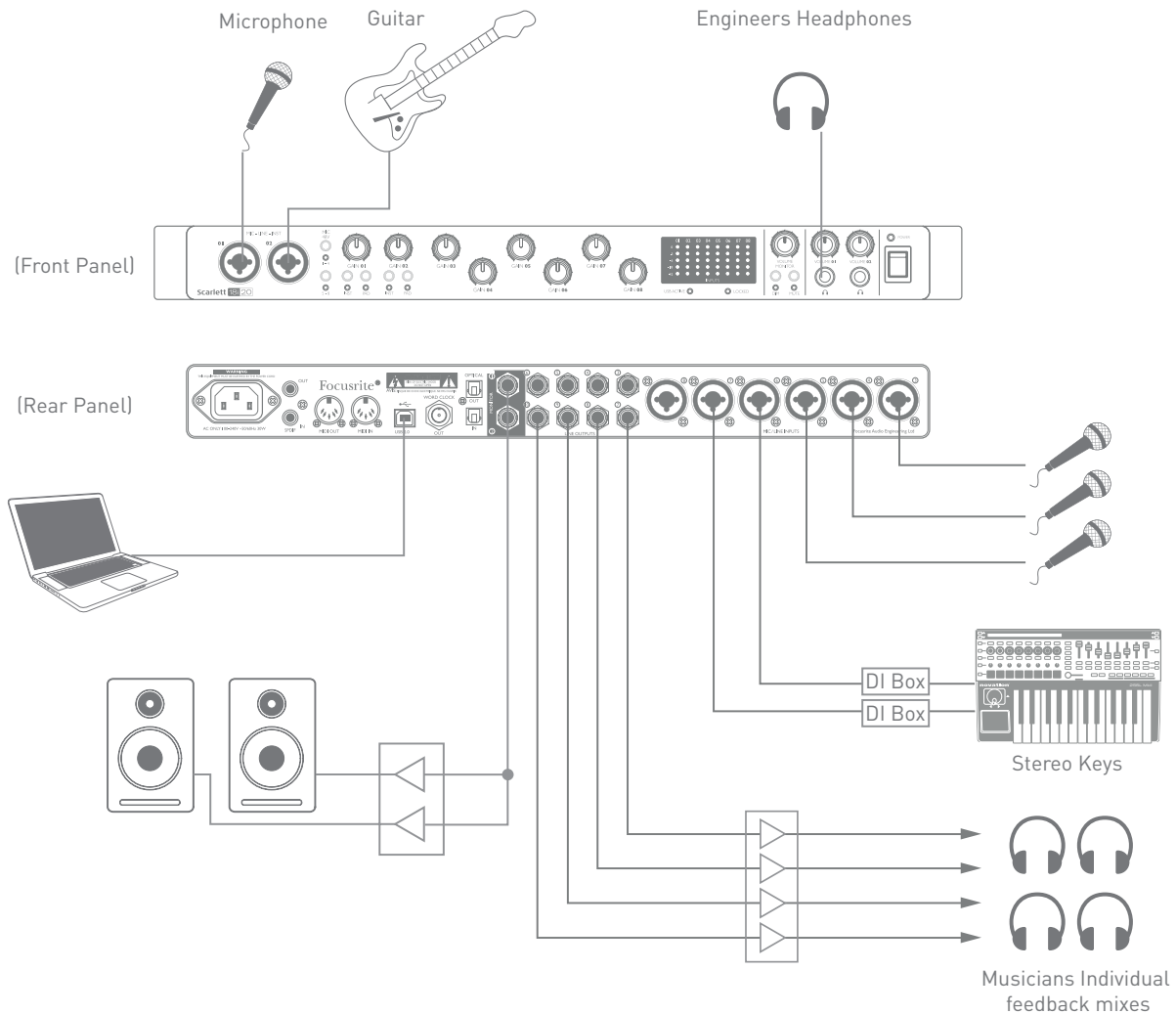


\*Typical name. Terminology may differ slightly between DAWs.

## Example of Usage

The Scarlett 18i20 is an excellent choice for numerous recording and monitoring applications. Some typical configurations are shown below.

### 1. Recording a band



This setup illustrates a typical configuration for multitrack recording with DAW software on your Mac or PC.

A selection of sources – microphones, a guitar and DI boxes – are shown connected to the Scarlett 18i20's inputs. Note that only Inputs 1 and 2 can be configured to accept instruments directly, so we have chosen to plug the guitar into Input 2. Ensure the INST button is pressed and the INST LED is illuminated.

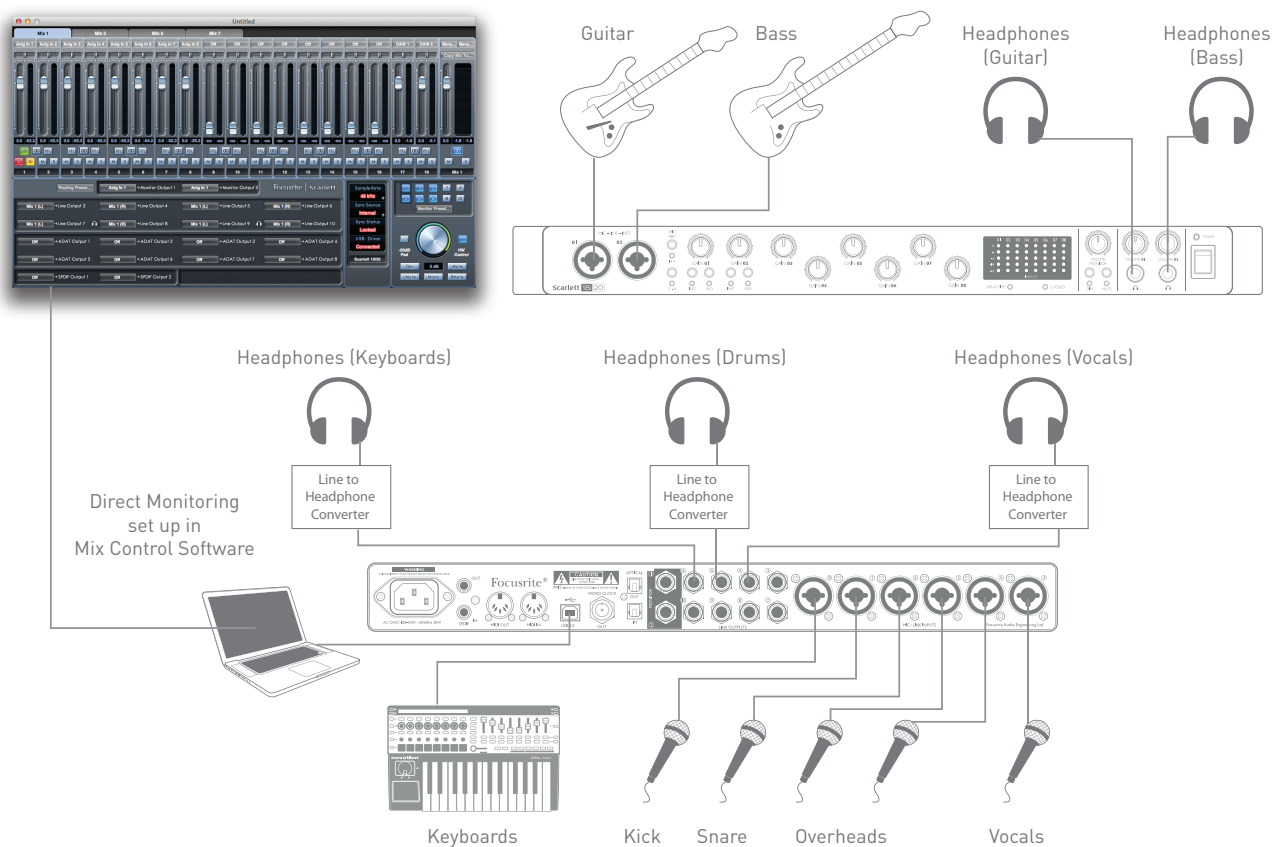
The connection to the PC or Mac running DAW software is via the USB cable supplied. This will carry all the input and output signals between the DAW and the Scarlett 18i20. Once the audio setup is correctly configured in the DAW, each input source will be automatically routed to its own DAW track for recording.

## Using Direct Monitoring

You will frequently hear the term “latency” used in connection with digital audio systems. In the case of the simple DAW recording application described above, latency will be the time it takes for your input signals to pass through your computer and audio software. Latency can be a problem for a performer who wishes to record while monitoring their input signals.

The Scarlett 18i20, in conjunction with Scarlett MixControl, allows “Direct Monitoring”, which overcomes this problem. You can route your input signals directly to the Scarlett 18i20’s headphone and line outputs. This enables the musicians to hear themselves with ultra-low latency – i.e., effectively in “real time” – along with the computer playback. The input signals to the computer are not affected in any way by this setting.

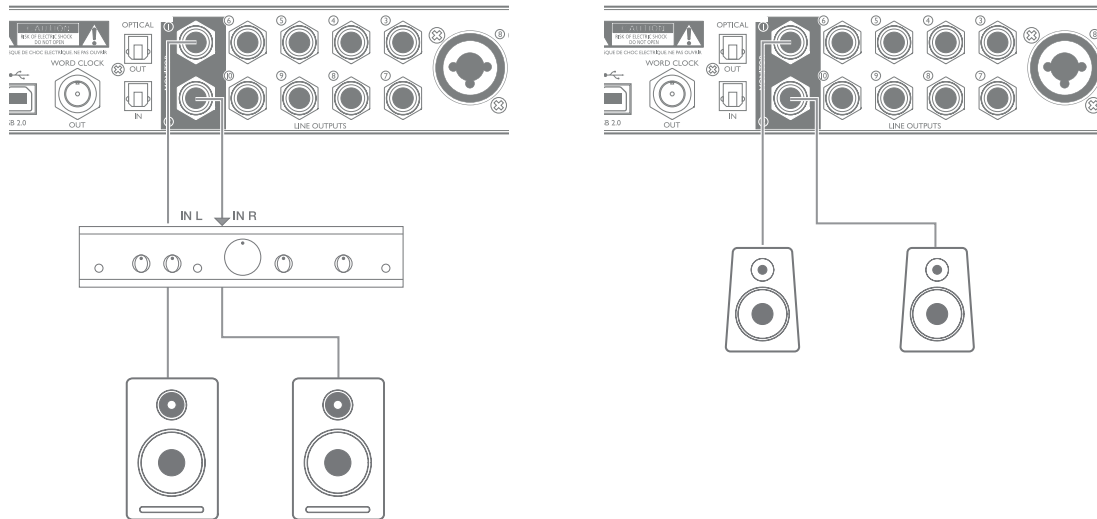
In the example, each of the band members is receiving his/her own monitor mix, because they each have their “own” Scarlett 18i20 output. Scarlett MixControl lets you define up to eight separate mixes, and these mixes may include previously recorded DAW tracks as well the current input signals.



When using Direct Monitoring, ensure that your DAW software is not set to route any inputs (what you are currently recording) to any outputs. If it is, the musicians will hear themselves “twice”, with one signal audibly delayed as an echo.

## 2. Connecting Scarlett 18i20 to loudspeakers

The 1/4" jack MONITOR outputs on the rear panel (Line Outputs 1 and 2) will normally be used to drive monitoring speakers. Self-powered monitors (e.g., typical computer speakers) incorporate internal amplifiers, and may be connected directly. Passive loudspeakers will require a separate stereo amplifier; in this case, the rear panel outputs should be connected to the amplifier's inputs.



All the line output connectors are 3-pole (TRS) 1/4" (6.35 mm) jack sockets, and are electronically balanced. Typical consumer (hi-fi) amplifiers and small powered monitors will have unbalanced inputs, either on phono (RCA) sockets, or via a 3.5 mm 3-pole jack plug intended for direct connection to a computer. In either case, use a suitable connecting cable with jack plugs at one end.

Professional power amplifiers will generally have balanced inputs.

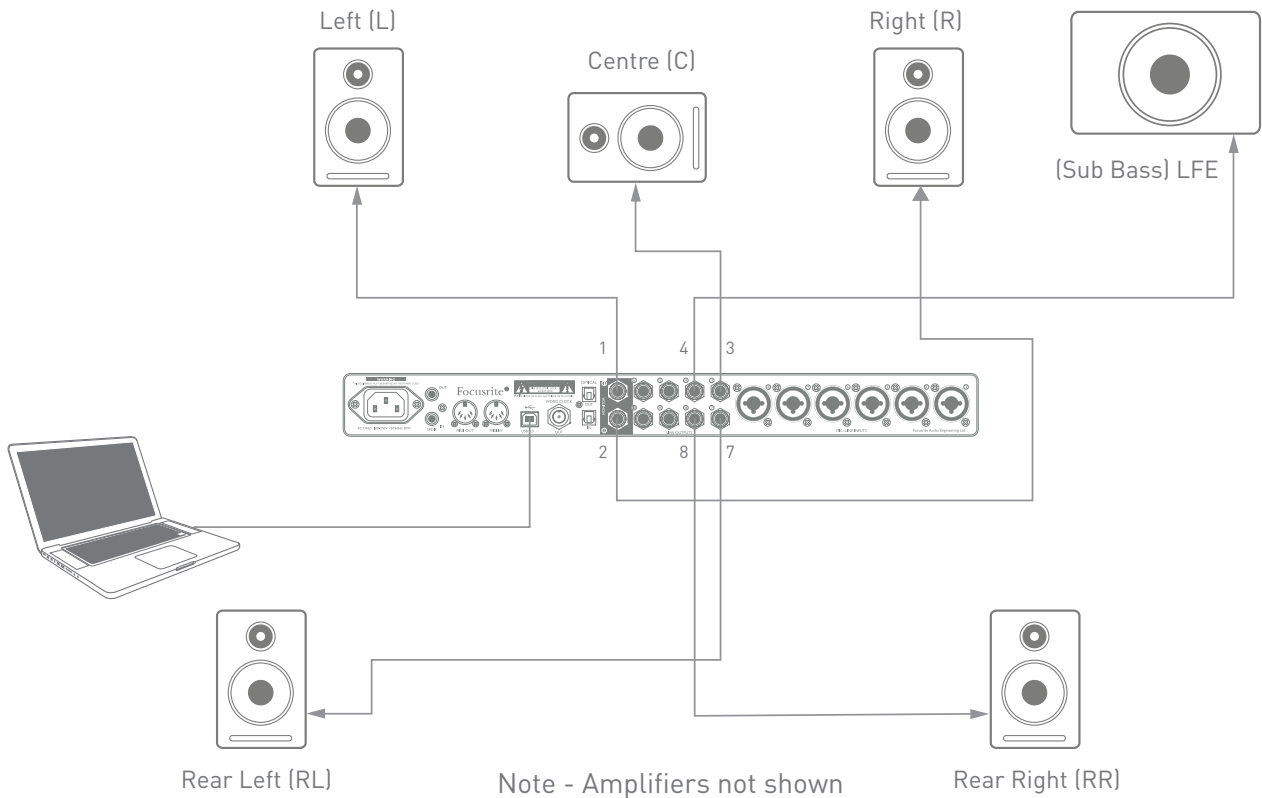
When mixing, you can connect several pairs of additional speakers (mid-field, near-field, etc.) to pairs of outputs and use Scarlett MixControl to route your mix to the different outputs as desired, to check your mix on the different types of speaker.



## Working with surround sound

Because the Scarlett 18i20 is equipped with ten line outputs, it is ideally suited for use when working in multichannel sound formats – LCRS, 5.1 surround or 7.1 surround, for example. Scarlett MixControl’s Monitor section is pre-configured for several multichannel formats, and resetting the monitor routing can be achieved with a few mouse clicks.

The example below shows how you would connect the six loudspeakers in a 5.1 surround monitoring arrangement.



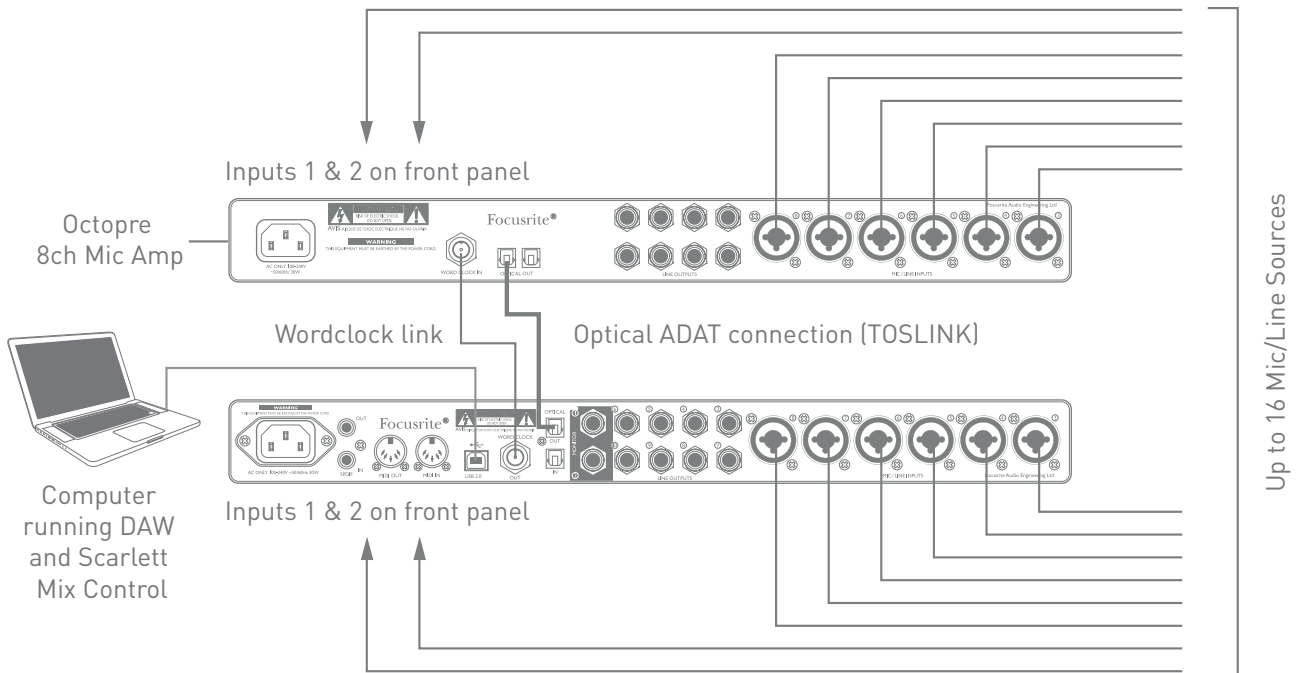
The table below summarises how some common multichannel formats are mapped to the Scarlett 18i20’s outputs:

FORMAT	OUT 1	OUT 2	OUT 3	OUT 4	OUT 5	OUT 6	OUT 7	OUT 8
Quad	L	R					RL	RR
2.1	L	R		LFE				
5.1	L	R	C	LFE			RL	RR
7.1	L	R	C	LFE	SL	SR	RL	RR

RL/RR = Rear Left/Rear Right; SL/SR = Side Left/Side Right; LFE = sub-bass channel

### 3. Using the ADAT connections

In addition to the eight analogue inputs, the Scarlett 18i20 has an optical ADAT input port which can provide an additional eight audio inputs at 44.1/48 kHz sample rate or four at 88.2/96 kHz. Using a separate 8-channel microphone preamplifier equipped with an ADAT output – such as the Focusrite OctoPre MkII – provides a simple and excellent method of expanding the Scarlett 18i20’s input capability.



The OctoPre MkII’s ADAT output is connected to the Scarlett 18i20’s ADAT input with a single TOSLINK optical cable. Stable word clock synchronisation may be achieved by connecting the Scarlett 18i20’s WORD CLOCK OUT to the OctoPre MKII’s WORD CLOCK IN and setting the OctoPre MkII to use this as its sync source; alternatively, the Scarlett 18i20 may be set (in Scarlett MixControl) to synchronise via Channel 1 of the incoming ADAT bitstream.

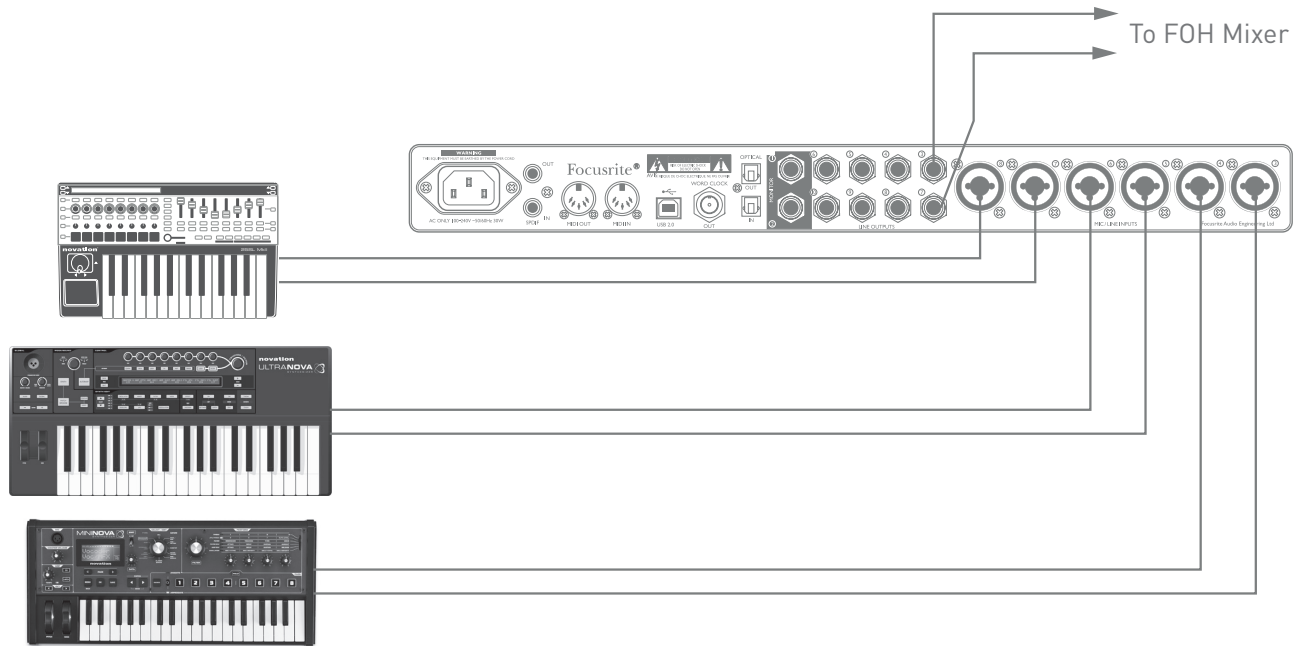
**TIP:** when interconnecting two digital devices by any method, always ensure that both are set to use the same sample rate.

The additional inputs realised by use of the ADAT port may be routed using Scarlett MixControl in exactly the same manner as the other inputs. The additional inputs can form part of any musician’s headphone mix, as required.

If a suitable ADAT “break-out” box is available, the ADAT output port may be used in the opposite manner; for example, additional outputs from the DAW may be converted into the analogue domain to allow the use of an external hardware mixing console to mix down a large number of DAW tracks.

#### 4. Using the Scarlett 18i20 as a stand-alone mixer

The Scarlett 18i20 has the ability to store a mix configuration defined in Scarlett MixControl within the hardware. This feature lets you configure it – for example, as an on-stage keyboard mixer – using your computer, and then upload the configuration to the device itself. Then you can use the Scarlett 18i20 as a simple, rack-mounting mixer as part of your keyboard rig to control the overall mix of multiple keyboards.



In the example illustrated, three stereo keyboards are connected to the rear panel inputs of the Scarlett 18i20; Outputs 3 and 4 go to the main PA system. The performer can adjust the volume of the individual keyboards from the front panel; he/she can also adjust the overall level of the keyboard mix.

# Scarlett MixControl

Scarlett MixControl software allows flexible mixing and routing of all audio signals to the physical audio outputs, as well as control of output monitor levels. All sample rate selection, digital syncing and buffer size settings (Windows only) are available from Scarlett MixControl.

**Note:** Scarlett MixControl is a generic product, and may be used with other hardware interfaces in the Focusrite Scarlett range. When you connect a Scarlett interface to your computer and launch Scarlett MixControl, the model of interface is automatically detected, and the software configured to suit the number of inputs and outputs, and other facilities, available on the hardware.

To open Scarlett MixControl:

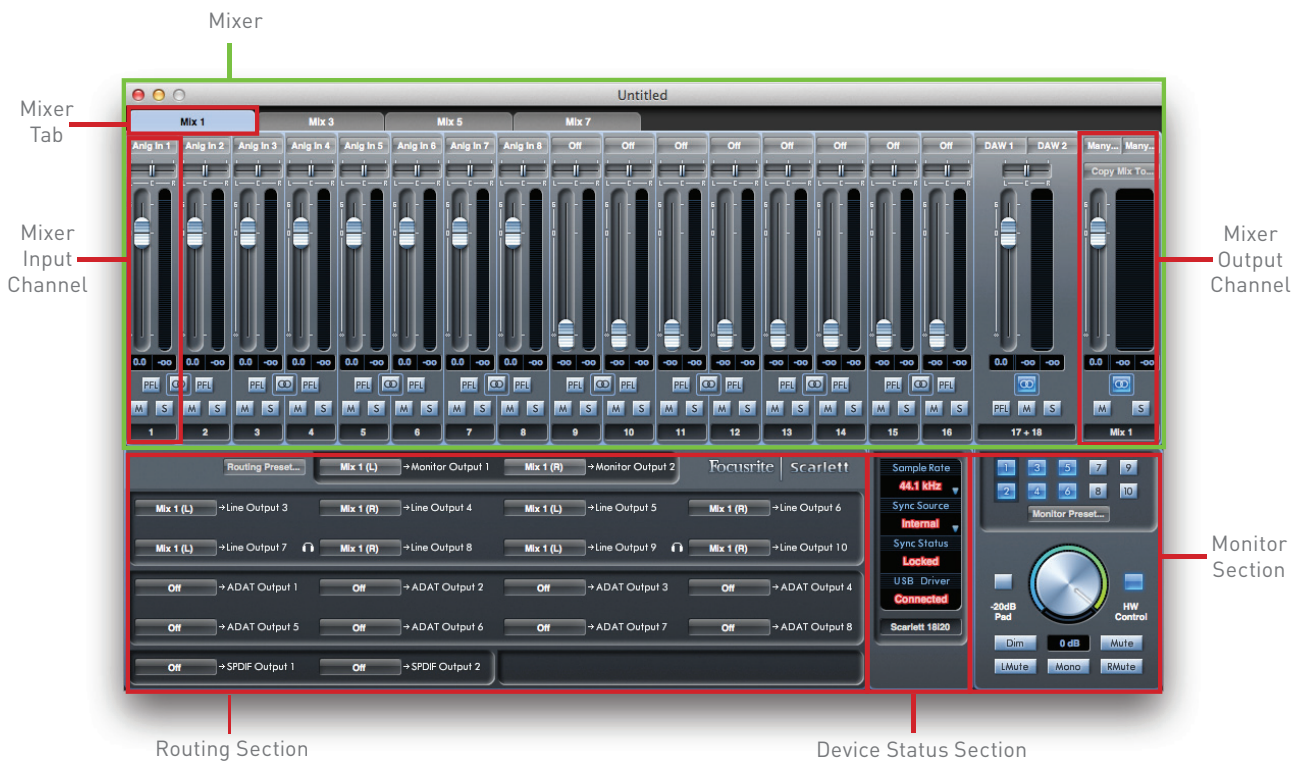
### On a Windows PC:

Go to **Start > Programs > Focusrite > Scarlett MixControl**.

### On a Mac:

Open **Finder > Applications > Scarlett MixControl**.

The Scarlett MixControl GUI (Graphical User Interface) will appear as shown below (Mac version illustrated).



## Mixer

Scarlett MixControl lets you create up to 8 mono or 4 stereo mixes, each of which may have up to 18 input channels. A combination of mono and stereo mixes, up to the maximum of 8 mono-equivalent, is also permissible.

Each mix may be formed from any of the 18 of the Scarlett 18i20's inputs and/or any of the 20 DAW outputs, and each mix may be sent to any number of outputs. All mixer controls are independent for each mix.

The Mixer Section is used to create mixes for monitoring and foldback purposes. The mixes you create do not affect how the audio inputs are routed to the DAW, nor does it affect the audio level of the signal to be recorded. How you set up the mixer section only affects what is sent to the audio outputs.

The levels of the input signals sent to the DAW for recording are adjusted on the Scarlett 18i20 using the GAIN controls.

An example of use for the mixer is recording multiple musicians simultaneously, e.g., a guitarist and a vocalist performing at the same time. To record them successfully, you need to provide them with a previously-recorded backing track, and a feed of each other's input signal. The guitarist will need to hear the backing track and his/her guitar mixed prominently, plus some vocals. The vocalist will need to hear the backing track, lots of his/her own vocals, plus a little of the guitar. You can create a separate mix for each performer with the exact mix and level that he/she needs. Each musician will have his/her own mix created using a different mixer tab.

## Mixer Tab



There are 8 Mixer Tabs, one for each mono mix.

## Input Channel

Two mixer input channels are shown below.



The controls available on the input channels are as follows:

### Audio source select

This is the button at the top of the channel strip; when no source is selected to the channel, it will display Off.



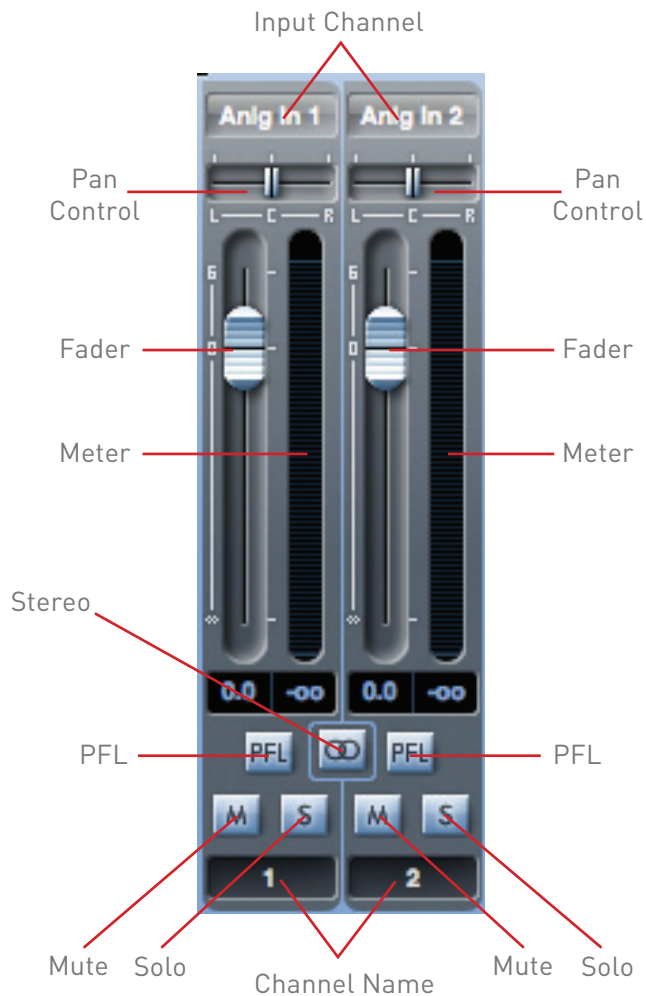
Clicking the button offers two lists: Inputs and DAW; selecting Inputs opens a list of all the available Scarlett 18i20 inputs, and selecting DAW opens a list of all the available DAW outputs. Any input not available is greyed-out (e.g., analogue inputs 2 to 8 are already assigned elsewhere in the example shown).

Note that channels may be mono, or in pairs for stereo operation. Stereo operation “borrows” a adjacent channel and lets you control both left and right legs of the stereo signal with a single fader. See “Stereo” on page 24 for details of mono/stereo channel definition.

Note that an input can only be assigned to one channel in each mix. If it has already been assigned, it will be greyed-out on other channels.

To include previously-recorded DAW tracks, or audio from other computer applications into the mix, select the two relevant DAW inputs as a stereo input track. These may typically be **DAW 1** and **DAW 2**, but this will depend how the outputs of the DAW or other

computer application are routed.



## Pan Control

If the mix has been defined as a stereo one (see “Output Channel” on page 25), the Pan control (in the form of a slider) positions the channel signal in the stereo image, i.e., the signal is faded between two audio outputs such as monitor L and R.

In the case of a stereo channel, setting the Pan control fully left mutes the right channel, and vice-versa.

## Fader

Click the fader knob and slide it to set the level of the channel signal in the mix. Double-clicking the fader knob sets the channel gain to 0 dB. Note that the channel gain range is from  $-\infty$  (muted) to +6 dB; the current fader level is displayed numerically below the fader.

## Meter

Each fader has a bargraph-style channel meter immediately to its right. The meter shows the level of the channel’s input signal. The maximum instantaneous level reached is displayed numerically in the box below, and clicking anywhere on the meter will reset the value. Note that the meter’s source is pre-fade – the meter always shows the level of the signal at the channel input, regardless of the fader setting.

## Clip light

The meter is colour coded; if the red portion at the top illuminates, the signal level is too high and digital clipping may occur. This can sound very unpleasant and should be avoided at all times! You will need to reduce the signal level either at source in the case of DAW tracks or external digital inputs, or by adjusting the GAIN controls on the Scarlett 18i20 in the case of the analogue inputs.

The red clip light remains illuminated once it has been triggered by excessive signal level; when the signal level has been reduced, click on the red area to reset it.

## Mute

Clicking this button mutes the channel; it illuminates red when Mute is active.

## Solo

Clicking this button solos the signal; all other channels in the current mix are muted. The channel fader remains active. The button illuminates yellow when Solo is active.

## PFL (Pre-fade listen)

Clicking this button performs a “non-destructive” solo; the signal in the channel is routed to the main Monitor Outputs 1 and 2. The soloed signal is pre-fade (i.e., its level will not be affected by the fader). PFL is purely a monitoring function and all other channels remain active with all signals still routed. The button illuminates green when PFL is active.

## Stereo

You can use this button to create a stereo channel from two consecutive mono channels (odd = L, even = R). Note that the mixer channel graphics alter; a single fader controls the stereo signal, but the meter has separate L and R bargraph displays.

## Channel Name

Each mixer channel may be named; by default, the names are the channel numbers. Double click the name to rename the channel to something more useful such as Vocal Mic.



## Output Channel



All the input channels are mixed together and routed to the output channel of the mixer. The output channel lets you control the overall level of the entire mix. (Remember there is a separate output channel for each.)

An output channel is mono by default; stereo operation may be selected by clicking its Stereo button. When the output channel is stereo, you will note that the tab for the mix doubles in size. This is because the stereo version takes up 2 channels of the available total output channel count.

An output channel's fader, meter, Mute and Solo buttons operate in the same manner as for an input channel. Note that the solo button is non-latching and routes the entire mix to Monitor outputs 1 and 2.



The output routing is selected by clicking on the **sel...** button at the top of the channel strip, which opens a drop-down list of all the available hardware outputs. You can route the mix to any or all of the Scarlett 18i20's hardware outputs; if just one output is selected, its name is displayed at the top of the output channel. The text **Many...** will be displayed if multiple outputs are selected.

The mix may be named; by default the name is **Mix n**. Click in the text field below the output channel and enter a more helpful name – e.g., **Monitor Mix**, or the name of the performer who is receiving the mix as his/her foldback feed. The name also appears on the mix tab.

You may copy an existing mix to another mix. This copies all the fader/pan/mute/solo settings and channel names. To do this, click on the **Copy Mix To...** button and select the mix (from the list presented) which you would like to duplicate the current one. Note that you can only copy a mono mix to another mono mix, and a stereo mix to another stereo mix. Therefore you must make sure that you have correctly set up the output channels before copying the mix.

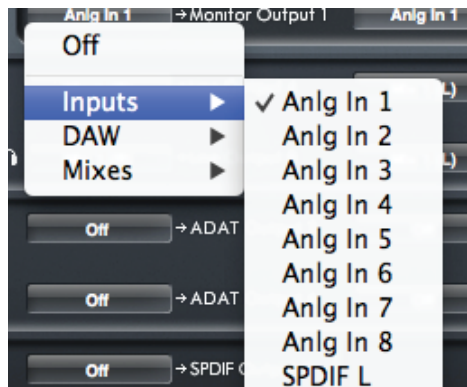
## Routing Section



The routing section is where you determine how the various audio sources available in both Scarlett 18i20 and Scarlett MixControl are to be routed to the Scarlett 18i20's physical outputs.

Every physical output on the Scarlett 18i20 is listed, and the audio signal to be sent to that output may be selected from the drop-down menu which appears when the button to the left of that output is clicked. Available sources include:

- Any input signal
- Any DAW playback track
- Any of the mixes from the mixer section\*



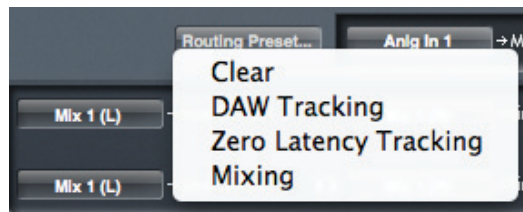
**\*Note:** if you have already named a mix (see previous section), then this name is displayed as the mix source name.

Note that the routing section also reflects any destination selections already made for the output channels in the mixer (see previous section). If you pre-assigned outputs when you created your mix, you will see that these assignments are already displayed in the routing section. This works both ways: if you change the audio source from the routing section, the mixer output channel will display the change automatically.

Remember that the signal available at the front panel 'Headphones 1' output jack will always be the signal currently routed to Line Outputs 7 and 8. The 'Headphones 2' output follows Line Outputs 9 and 10 in a similar manner.

**Note:** ADAT SMUX - When working at sample rates of 88.2 kHz or 96 kHz, the total number of ADAT channels available drops from eight (at 44.1/48 kHz) to four. At these sample rates, ADAT channels 5-8 are greyed out.

## Routing Presets



As Scarlett MixControl permits such great flexibility in routing possibilities, Routing Presets are provided to help you with making your routing and mixer set-ups. Using Presets enables you to set up your routing quickly for recording (monitoring your inputs); mixing (sending signals out to outboard processors or external mixer).

Clicking the **Routing Preset...** button opens a list from which a further selection may be made; each of the options is described below.

### Clear

Clicking **clear** deselects all output routing. This is useful for resetting all routing when starting a new task; it saves you from having to manually turn everything off first.

### DAW Tracking

**DAW Tracking** is intended to be used for the initial recording process. It automatically routes DAW Tracks 1 and 2 to all Line Outputs as odd-even pairs; this includes the main Monitor Outputs (1 and 2) and the front panel Headphone Outputs 1 and 2. All the input channels must be monitored from within the DAW application.

### Zero Latency Tracking

The **Zero Latency Tracking** option can be used during the recording process. It routes the outputs of Mix 1 and Mix 2 to all your Line Outputs simultaneously as odd-even pairs; this includes the main Monitor Outputs (1 and 2) and the front panel Headphone Outputs 1 and 2. Line Inputs and DAW outputs must be set up in Mix 1 (if stereo, or Mixes 1 and 2 if mono) so that you can monitor these sources with ultra-low latency. You should ensure that you are not monitoring the same signals within your DAW at the same time, otherwise you will hear the signal twice (once direct from Scarlett MixControl and a second time delayed - because of latency - from your DAW.)

**TIP:** If you are using a stereo mix, the left output channel will be routed to all odd-numbered outputs and the right channel to all even-numbered outputs. With mono mixes, odd-numbered mixes go to odd-numbered outputs and even-numbered mixes to even-numbered outputs.

## Mixing

The **Mixing** preset can be used during the mixing stage. DAW tracks are routed to the line output of the same number, e.g., DAW tracks 1-10 are routed to Monitor Outputs 1-2 and Line outputs 3-10 respectively. In the same manner, DAW tracks 11-18 are routed to the ADAT output connector and tracks 19 and 20 to the S/PDIF output as a stereo pair. Thus all 20 tracks are simultaneously available as physical outputs, if required.

## Monitor Section

The signal levels at the monitor outputs and line outputs are adjusted in Scarlett MixControl's Monitor Section. You can configure the hardware and software so that the VOLUME MONITOR control on the front panel will set the overall monitoring volume via the desired outputs, such as your stereo monitors or your surround sound system. Alternatively, the VOLUME MONITOR control can be disabled for specific outputs; e.g., when you are using some of the outputs as sends to external processors (such as a compressor), you want the front panel control to adjust only the level at the outputs which are being used for monitoring purposes. Additional monitor functions such as mute, dim and mono are also provided.



## Monitor control enable buttons (1 to 10)



These buttons select which line outputs of the Scarlett 18i20 are affected by the other GUI monitor section controls, and also the front panel monitor controls. Depending on your monitoring set-up, you can control no speakers, just a single pair of speakers, or up to 10 speakers simultaneously.

Note: the levels at all the digital outputs on the Scarlett 18i20 are unaffected by Scarlett MixControl's monitor section controls. If you need to route individual DAW tracks to digital outputs, adjust the output levels from the DAW.

The ten buttons determine the control status of the ten line outputs. There are three states; clicking on the buttons toggles between blue and red states; clicking while holding SHIFT down puts them in the grey state.



When the button is blue, the level of the line output is controlled by the GUI monitor section.



When the button is red, - the line output is muted.



When the button is grey, the level at the line output is fixed at full volume and is not controlled by the GUI monitor section.

**WARNING:** The 'grey' state should be selected when a line output is to be used to drive external processors. Note that in this state, the signal routed to that output will be at full level. Should you have amplifiers/loudspeakers connected to the output, this may result in a very high sound level in your monitor speakers or headphones. Always check your levels (in your DAW or the Scarlett MixControl Mixer) before setting the monitor button to this mode.

## Monitor Presets dropdown menu



A range of preset monitoring configurations is provided; click on the **Monitor Preset...** button to open a drop-down list. These presets allow simple selection of common monitoring configurations. For the monitor presets to work correctly, you must have your speakers connected to the line outputs as shown in the table on page 17.

The Monitor Presets function as follows:

- **Off** – all monitor control buttons disabled; all analogue outputs are off.
- **Mono** – only Line Output 3 is enabled. Connect to a centrally-located speaker for working in mono.
- **Stereo** – Line Outputs 1 and 2 (Monitor 1 and 2) are enabled. All other channels are muted. Connect Output 1 to your left monitor and 2 to your right.
- **Quad** – Line Outputs 1, 2, 7 and 8 are enabled. All other channels are muted. Connect Outputs 1 and 2 as for stereo; Output 7 to Rear Left and 8 to Rear Right.
- **2.1 Surround** – Line Outputs 1, 2 and 4 are enabled. All other channels are muted. Connect Outputs 1 and 2 as for stereo, and Output 4 to your sub-bass (LFE) speaker.
- **5.1 Surround** – Line Outputs 1, 2, 3, 4, 7 and 8 are enabled; Outputs 5 and 6 are muted. Connect Outputs 1 and 2 as for stereo; Output 3 is the C channel, Outputs 7 and 8 are Left and Right Surround respectively, and Output 4 is the sub-bass (LFE) channel.
- **7.1 Surround** – Outputs 1 to 8 are enabled and Outputs 9 and 10 are muted. Connect as for 5.1 Surround, adding Left Side speakers to Output 5 and Right Side to Output 6.
- **Mid + Phones 1** – for use with multiple pairs of stereo monitors; connect a pair of midrange monitors to Outputs 7 and 8.
- **Mini + Phones 2** – as above; connect a pair of near-field monitors to Outputs 9 and 10.

## Monitor Section Controls

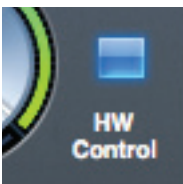
The controls in Scarlett MixControl's Monitor section will affect those channels that have been selected for monitor control (i.e., those displaying 'blue' status - see above).

## Monitor level control knob



Set the output level of all selected outputs with this control, using the mouse. The numeric display below shows the current monitor output level.

## Hardware control button



Clicking this button transfers control of overall monitoring level between the Scarlett MixControl and the Scarlett 18i20's front panel VOLUME MONITOR control. When enabled, the button shows blue and the on-screen knob is disabled.

**Note:** if the hardware control position does not match the software control position as the H/W Control button is switched in and out, the volume knob works in pick-up mode. A volume change will only occur when the position of the hardware knob matches or passes through the position commanded by the software control. This will ensure that there are no sudden unwanted volume increases when the knob is moved.

## Dim



Attenuates the monitor output level by 18 dB.

## Mute



Mutes all monitor outputs.

## Left Mute switch



Mutes all odd-numbered outputs.

## Right Mute switch



Mutes all even-numbered outputs.

## Mono switch



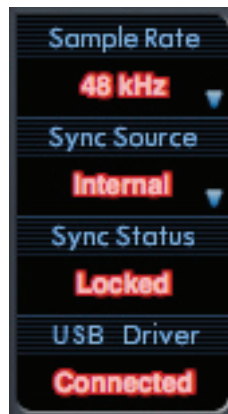
Sums (combines) the odd- and even-numbered output signals in pairs (i.e., 1+2, 3+4, etc.). The summed signals are then sent to both outputs of each pair.

**NOTE:** Remember that the monitor functions above only affect the outputs that have been selected for control in the monitor control section (i.e., outputs showing 'blue' status).

## 20 dB Pad

If using active (powered) monitors for your primary monitoring, you may find that normal listening levels require the monitor volume knob to be set quite low. In this case, click the **-20 dB** Pad button to reduce the level at Line Outputs 1 and 2 (Monitor Outputs 1 and 2) by this amount. This will allow the Volume knob to operate over a wider range.

## Device Status section



The Device Status section displays information about the sample rate, synchronisation and driver status of the Scarlett 18i20. The sample rate and sync source can also be set here.

## Sample Rate display

This displays the sample rate currently in use by the Scarlett 18i20. To change the sample rate, click on the red displayed value and select 44.1 kHz, 48 kHz, 88.2 kHz, or 96 kHz from the list.

**Note:** it is advisable to quit your DAW application BEFORE you make sample rate changes to prevent any undesirable (and audible) side-effects!

## Sync Source display

Displays the currently selected sync source. To change the sync source, click on the red sync source text and select from the list:

- **Internal** – the Scarlett 18i20 uses its own internal generator for word clock
- **ADAT** – the word clock source is derived from the signal at the ADAT input
- **S/PDIF** – word clock is derived from the signal at the S/PDIF input

## Sync Status display

Displays **Locked** when the Scarlett 18i20 has successfully locked to the specified Sync Source. If **No Lock** is displayed, the unit cannot lock to an external synchronisation source. If this occurs, please check that the cables are properly connected, and that the external digital devices have been set up as master devices and have been set to the same sample rate as the Scarlett 18i20.

## USB Driver

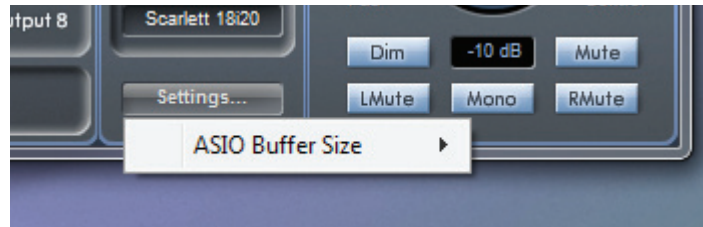
This should display **Connected** at all times when the Scarlett 18i20 is connected to the computer via



USB. If **Disconnected** is displayed, please check the USB connections and that the unit is switched on. If it continues to show **Disconnected**, restart the computer and re-launch Scarlett MixControl.

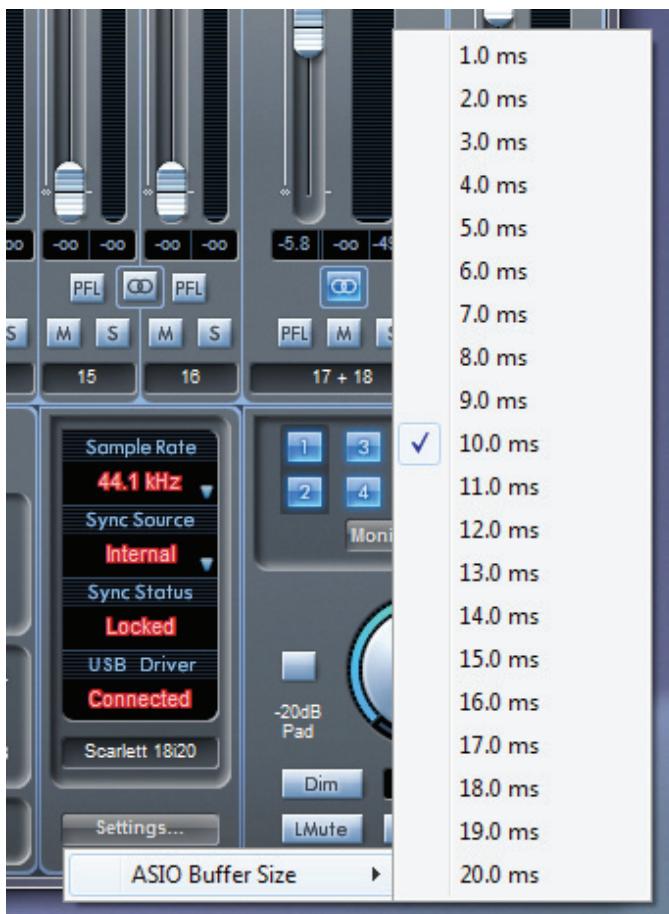
## Settings Menu

The **Settings...** button is only available on the Windows version of Scarlett MixControl. It allows you set the size of the ASIO buffer.



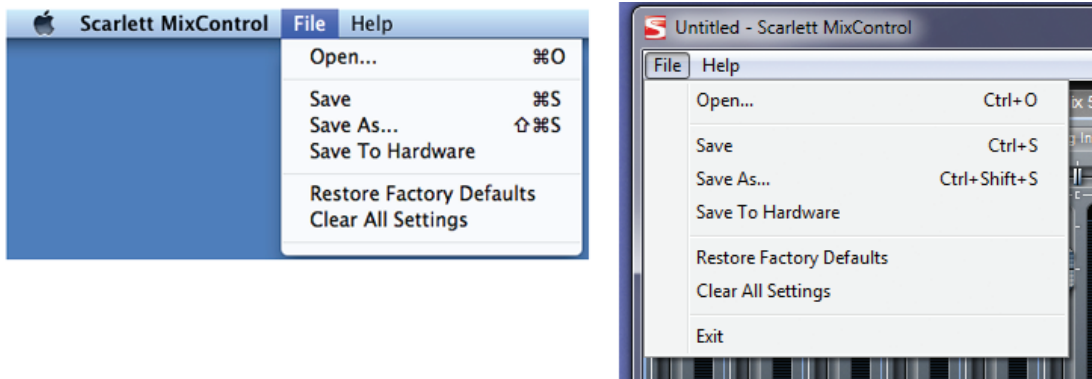
This option lets you set the buffer size of your ASIO driver. A small buffer size will result in lower latency, but at the expense of increased CPU usage. A high buffer size will result in higher latency, but lower CPU usage.

If you are using lots of virtual instruments and effects processing in your DAW project, and the CPU usage is high, then increase the buffer size.



## File Menu

The File menus differ slightly between Mac and Windows versions of Scarlett MixControl.



- **Open** - opens a File Open dialogue box, allowing selection of any previously saved Scarlett MixControl mix data.
- **Save** - opens a File Save dialogue box, allowing selection of a location to which your Scarlett MixControl mix data can be saved. Subsequent Saves overwrite the original file.
- **Save As** - opens a File Save As dialogue box. Use this option if you want to keep your original saved mix data but save the current mix data under a different filename.
- **Restore Factory Default** - resets the Scarlett 18i20 to its original default factory state. This can be used to globally reset all mixer, routing, and monitor settings, allowing creation of a new set-up from scratch.
- **Save to Hardware** - This saves the current Scarlett MixControl set-up to the Scarlett 18i20 hardware. If you are moving the Scarlett 18i20 from one computer to another and want to retain the set-up, or want to use it in “stand-alone” mode, select this option. Note that Scarlett MixControl does not automatically load from hardware (as this would overwrite a current set-up).

As with nearly all other software applications, ‘Open’, ‘Save’ and ‘Save As’ all have standard keyboard shortcuts.

## Scarlett 18i20 Performance Specifications

<b>Configuration</b>	
Inputs	18: analogue (8), S/PDIF (2), ADAT (8)
Outputs	20: analogue (10), S/PDIF (2), ADAT (8)
Mixer	Fully assignable 18-in/16-out mixer
<b>Digital Performance</b>	
A-D Dynamic Range	105 dB CCIR-RMS (all inputs)
D-A Dynamic Range	103 dB CCIR-RMS (line outputs)
Supported sample rates	44.1 kHz, 48 kHz, 88.2 kHz & 96 kHz
Clock jitter	<250 ps
<b>Microphone Inputs</b>	
Frequency Response	20 Hz $\pm$ 0.5 dB, 20 kHz $\pm$ 0.1 dB (min. gain)
THD+N	0.001% (1 kHz, -1dBFS, 20 kHz BW)
Noise EIN	-122 dBu CCIR-RMS (measured at 60 dB of gain with 150 ohm termination)
Maximum input level	+8 dBu (without pad)
<b>Line Inputs</b>	
Frequency Response	20 Hz – 20 kHz $\pm$ 0.1 dB
THD+N	0.007% (1 kHz, -1dBFS, 20 kHz BW)
Noise (NiPoS)	-105 dBFS CCIR-RMS (measured at min. gain with 50 ohm termination)
Maximum input level	+28 dBu
<b>Instrument Inputs</b>	
Frequency Response	20 Hz – 20 kHz $\pm$ 0.1 dB
THD+N	0.007% (1 kHz, -1dBFS, 20 kHz BW)
Noise (NiPoS)	-103 dBFS CCIR-RMS (measured at min. gain)
Maximum input level	+8 dB (without pad)
<b>Line Outputs 1 &amp; 2</b>	
Maximum Output Level (0 dBFS)	+16 dBu, balanced
THD+N	0.001% (1 kHz, -1dBFS, 20 kHz BW)

## Physical and Electrical Characteristics

<b>Analogue Inputs Inputs 1 &amp; 2</b>	
Connectors	Neutrik XLR Combo: Mic/Line/Inst, on front panel
Mic/Line switching	Automatic
Line/Instrument switching	2 x front panel switches
Phantom power	Shared +48 V phantom power switch for inputs 1 to 4
<b>Analogue Inputs 3 to 8</b>	
Connectors	Neutrik XLR Combo: Mic/Line, on rear panel
Mic/Line switching	Automatic
Phantom power	Shared +48 V phantom power switch for inputs 1 to 4 and 5 to 8
<b>Analogue Outputs</b>	
Main outputs	10 x balanced ¼" TRS jacks (on rear panel)
Stereo headphone outputs	2 x ¼" TRS jack on front panel
Main monitor output level control	On front panel
Headphones level controls	
<b>Other I/O</b>	
ADAT I/O	2 x TOSLINK optical connectors; 8 channels @ 44.1/48 kHz
S/PDIF I/O	2 x phono (RCA); can be re-assigned to ADAT ports in software
Word clock output	BNC connector
USB	1 x USB 2.0 Type B connector
MIDI I/O	2 x 5-pin DIN sockets
<b>Weight and Dimensions</b>	
W x D x H	482 mm x 265 mm x 45 mm (1U)
Weight	3 kg

## **Troubleshooting**

For all troubleshooting queries, please visit the Focusrite Answerbase at [www.focusrite.com/answerbase](http://www.focusrite.com/answerbase) where you will find articles covering numerous troubleshooting examples.

## **COPYRIGHT AND LEGAL NOTICES**

Focusrite is a registered trade mark and Scarlett 18i20 is a trade mark of Focusrite Audio Engineering Limited.

All other trade marks and trade names are the property of their respective owners.  
2013 © Focusrite Audio Engineering Limited. All rights reserved.